

OPENING DOORS SINCE 1843

Loveitts est. 1843
THE ESTATE AGENTS



Station Road
Coventry, CV7 8FG

£500,000



Station Road

Coventry, CV7 8FG

Offering GENERATIONAL LIVING with a practical and adaptable layout perfect for sharing or extended families, Loveitts Estate Agents are pleased to offer to the market this extended, and much improved detached dormer bungalow situated in the popular village of Arley with RURAL VIEWS to the rear.

Conveniently situated for the city of Coventry and Nuneaton town the accommodation in brief comprises; Entrance Hall with staircase providing access to the first floor and panelled doors to all the ground floor rooms.

Spacious lounge/dining room having two sets of PVCu double glazed patio doors providing access to the FABULOUS PVCu double glazed CONSERVATORY overlooking the rear garden. Kitchen with a range of modern units including integrated hob and oven. Utility/storeroom located to the side of the property having a range of modern units and space for a washing machine and tumble dryer.

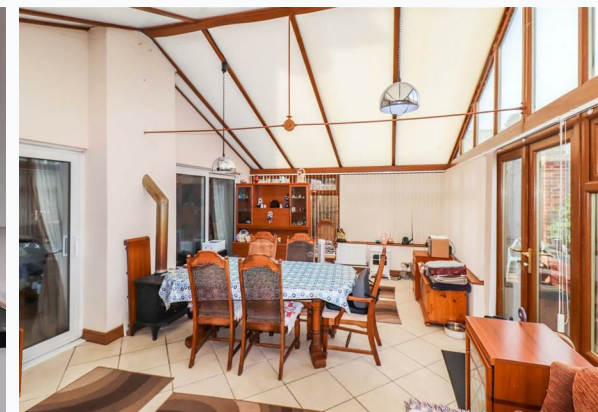
Two ground floor bedrooms with the master bedroom being extended to the front elevation with fitted wardrobes and opens into the extended dressing room also having fitted wardrobes and provides access to the en suite shower room having a double shower cubicle, vanity unit with incorporated hand wash basin and a low-level W.C. There is also a further ground floor family bathroom having a corner bath, pedestal hand wash basin and a low-level W.C.

First floor landing has a built-in wardrobe/storage cupboard and panelled doors leading to a further two double bedrooms both having double glazed skylights and access to the remaining loft storage space. Shower room having a shower cubicle, pedestal hand wash basin and a low-level W.C. The property also benefits from gas central heating and PVCu double glazing.

Outside there is a tarmacadam frontage providing off road parking for a number of vehicles and the enclosed rear garden being laid to lawn with a paved patio area and a large and extremely useful TIMBER WORKSHOP with power and light points.

INTERNAL INSPECTION ESSENTIAL!

If you're looking to sell your property please contact us here for a FREE Market Appraisal <https://valuation.loveitts.co.uk/home/835-loveitts>





- Much Improved & Extended Detached Dormer Bungalow
- Spacious Lounge/Dining Room
- Full Width Conservatory
- Kitchen With Integrated Hob & Oven
- Utility/Store Room
- Four Bedrooms
- Master Bedroom Having Dressing Room & En Suite
- Family Bathroom & First Floor Shower Room
- GFCH & PVCu Double Glazing
- Enclosed Garden With Open Views

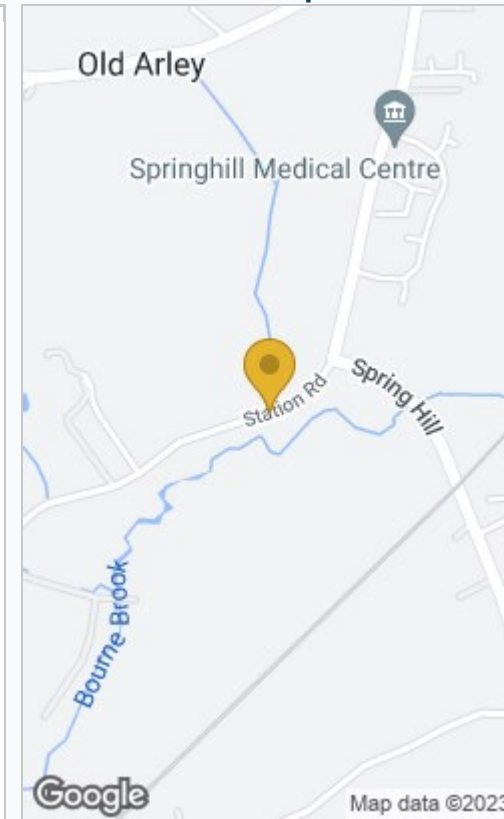


Floor Plan



Total area: approx. 162.9 sq. metres (1753.0 sq. feet)

Area Map



Energy Efficiency Rating

	Current	Potential
Very energy efficient - lower running costs		
(92 plus) A		
(81-91) B		
(69-80) C		
(55-68) D		
(39-54) E		
(21-38) F		
(1-20) G		
Not energy efficient - higher running costs		
	66	81
England & Wales	EU Directive 2002/91/EC	

These particulars, whilst believed to be accurate are set out as a general outline only for guidance and do not constitute any part of an offer or contract. Intending purchasers should not rely on them as statements of representation of fact, but must satisfy themselves by inspection or otherwise as to their accuracy. No person in this firm or its employees has the authority to make or give any representation or warranty in respect of the property.



Nuneaton
39 Church Street, Nuneaton CV11 4AD
024 7634 7676

Registered in England & Wales Company no. 7558151